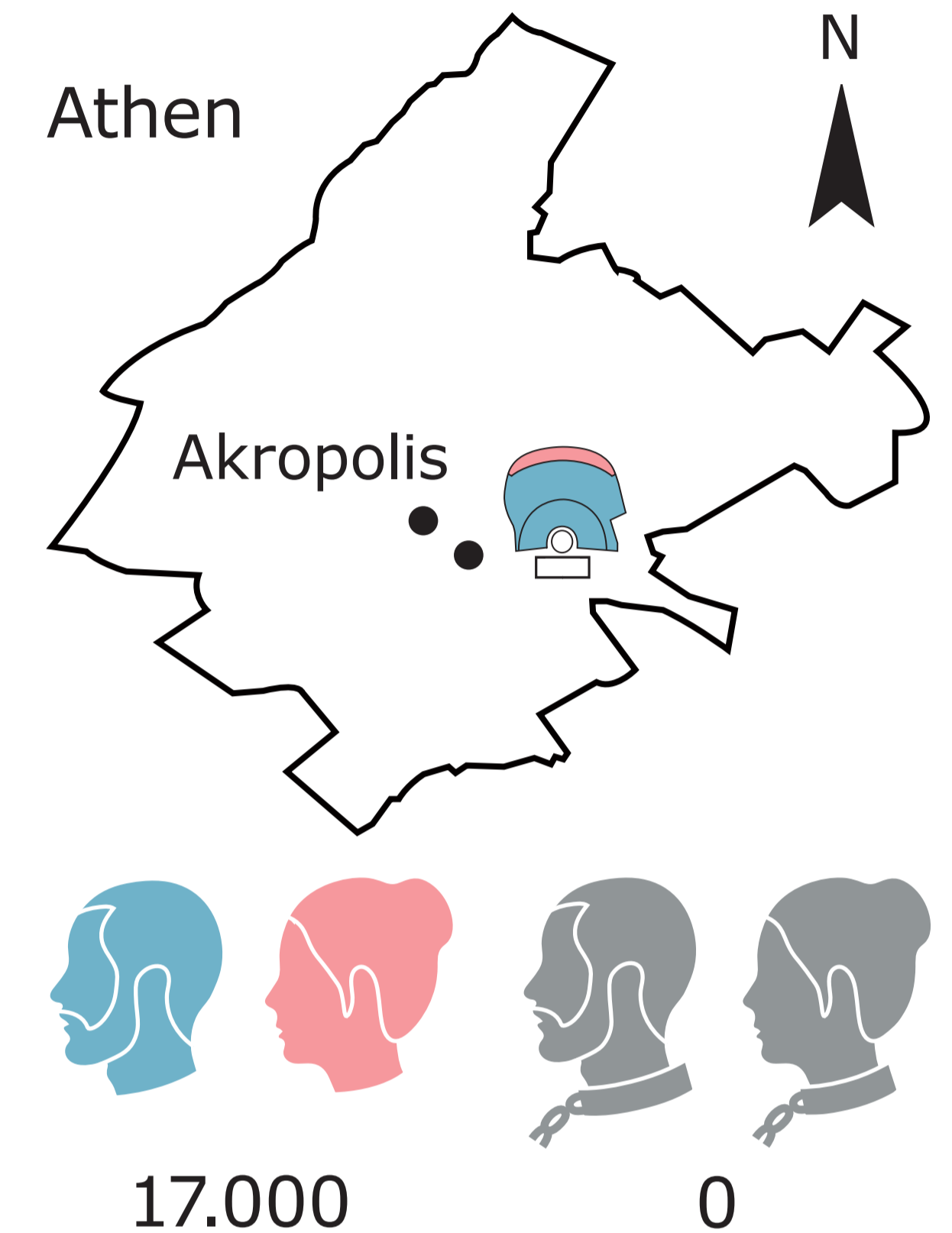
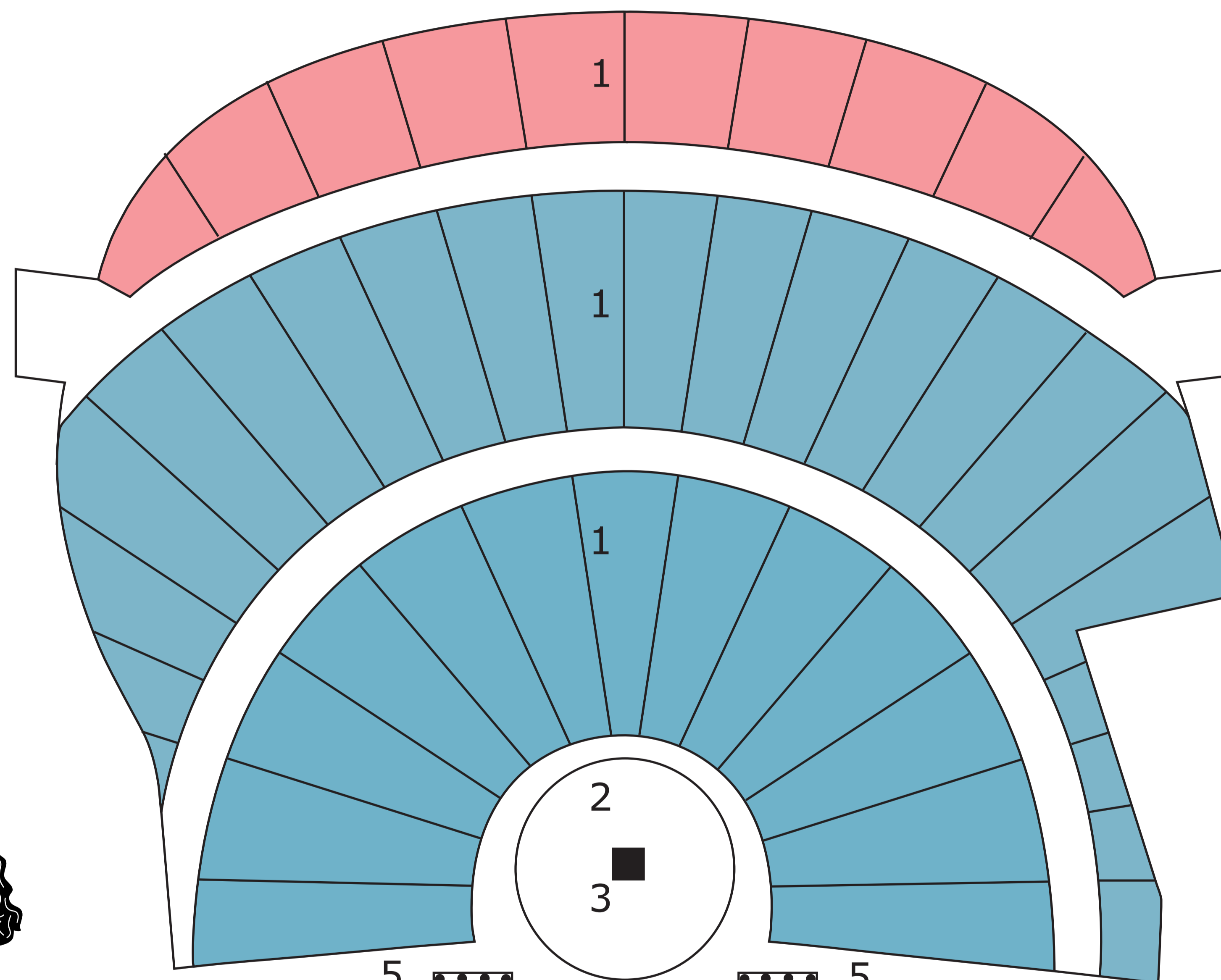


Der Ursprung des Theaters

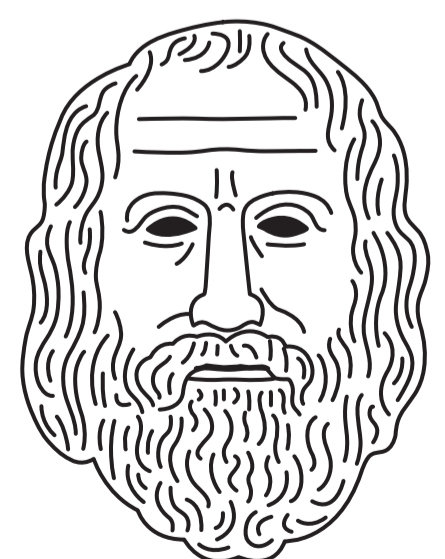
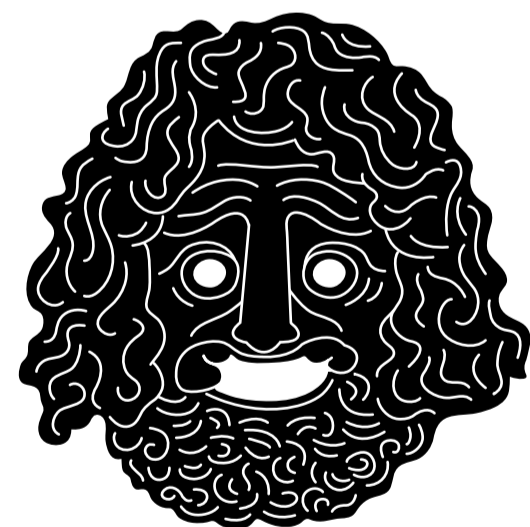
Das Dionysostheater

- 1 Theatron
Zuschauerraum
- 2 Orchestra
Spielraum des Chores
- 3 Altar
- 4 Proskenion
Spielraum der Schauspieler
- 5 Parodos
Choreingang
- 6 Skene
Kulissengebäude
- 7 Säulenhalle

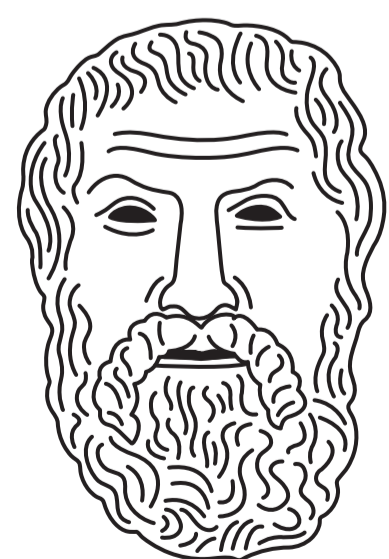


Tragödie

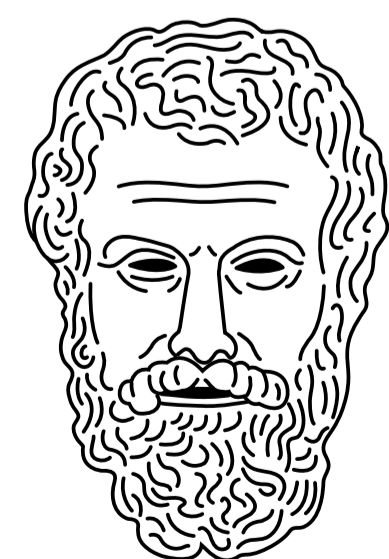
typische
Schauspielmaske
und wichtige Dichter



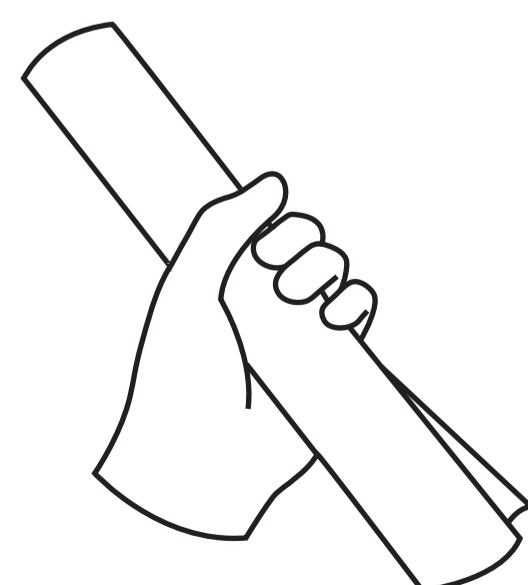
Euripides
480 - 406 v. Chr.



Sophokles
495 - 405 v. Chr.

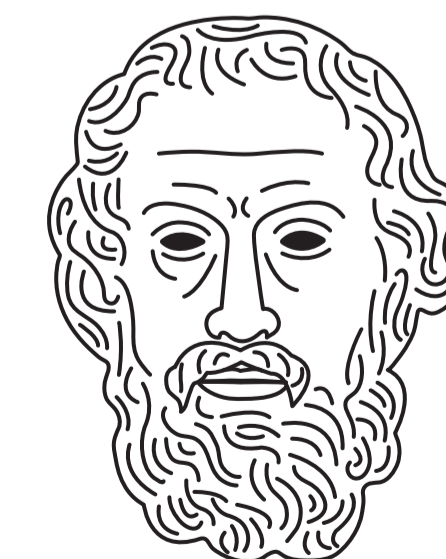


Aischylos
525 - 455 v. Chr.

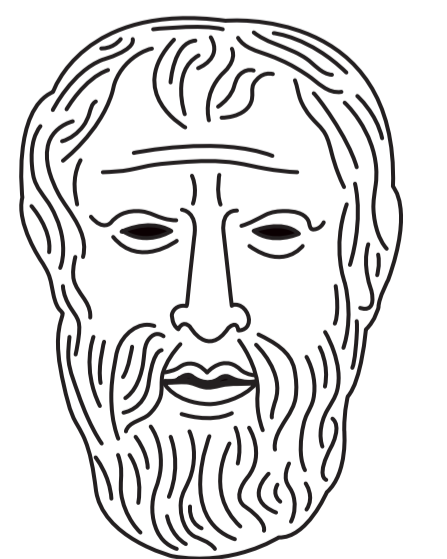


Komödie

typische
Schauspielmaske
und wichtige Dichter



Kratinos
519 - 422 v. Chr.



Aristophanes
450 - 380 v. Chr.

